

Car Digital Hard Disk Recorder

User Manual



Before installing and using, be sure to read the Manual, then you will properly use and protect your machine.

The first part of the statement concerns the matters to be attention before installing and using.

➤ **Attention**

- To protect your rights, before using and installing, please carefully read the contents of the manual.
- This product is used for car inside, in order to prevent short-circuit or the risk of electric shock, do not make the machine in the rain or humidity environment.
- Event of any solid or liquid into the machine, please disconnect the power of the machine immediately, and ask the qualified technical staff to check, then restart it.
- The product is high-tech equipment; machines can not be repaired by users even very small original part. Once failure occurs, please ask for the qualified technical personnel, or contact with the dealer. Do not repair it by users themselves.

➤ **Installation Environment**

- 8-36V DC power supply, please confirm the local power supply before power on.
- If the machine were not used for a long time, please completely disconnect the video's power supply.
- Please select the appropriate location for the installation of the machine, where the air can flow freely around the machine to avoid overheating or water inflow.
- Machine can not be installed near the radiators, or near the ventilation road which is near heat, or directly under sunshine, or too much dust, or rain water, or near the area where the mechanical vibration or impact happens.

➤ **Package List**

Name	Quantity
HDD Mobile DVR	1
User Manual	1
Certificate of approval	1
Remote Control (not include battery)	1
Connecting Cable	3
Key	1

Note: When the specification or parameters changes, no other announcement in addition.

Contents

1	Product Overview.....	3
2	Basic functions.....	3
2.1	Audio/Video Compression Format.....	3
2.2	Audio/video recording mode.....	3
2.3	Image quality when monitoring, recording, playback.....	3
2.4	Total Resources.....	4
2.5	Alarm pre-recording.....	4
2.6	Full duplex.....	4
2.7	Malfunction alarming function.....	4
2.8	Self-test the status and self-recovery.....	4
2.9	Front-end device control and multi-channel monitor and switch.....	4
2.10	Networking.....	5
2.11	Data backup.....	5
2.12	Authority, encryption, data safety.....	5
2.13	Log function.....	5
3	Features.....	5
3.1	Operating system.....	5
3.2	Compression format.....	5
3.3	Monitoring and Recording.....	6
3.4	Index and Playback.....	6
3.5	HDD storage and data backup.....	6
3.6	Control.....	6
3.7	Others.....	7
4	Technical Parameters.....	7
5	Instruction of Installation.....	10
5.1	Instruction of External Interface Wiring.....	10
5.2	Instruction of HDD Installation.....	11
6	Instruction of Using.....	13
6.1	Instruction of Front Panel.....	13
6.2	Instruction of Remote Control Operation.....	14
6.3	Menu Setting Instruction:.....	16
6.4	DVR Video Playback Instruction.....	37
6.5	Video Backup.....	39
6.6	PTZ control.....	40
6.7	Video Data Volume.....	40
6.8	Extranet Port Mapping.....	41
6.9	Domain binding setting.....	46
6.10	WIFI hotspot.....	47

1 Product Overview

The four-channel /eight –channel /twelve–channel Embedded Digital Hard Disk Video Recorder、 Embedded Network Hard Disk Video Recorder is designed for car safety. It uses embedded processor and embedded operating system, combined with video / audio compression / decompression, GPS, car recorder, and the capacity hard disk storage technology to confirm the high intelligence and high stability. Widely used for bus, ship, train, and other areas of security.

2 Basic functions

2.1 Audio/Video Compression Format

The video adopts latest IS014496-10 (H.264) video compression technology, high compression rate to ensure a better image quality under less storage; the audio adopts G711A compression method, output a better voice with low distortion.

2.2 Audio/video recording mode

- Compression format
The audio video data are stored through special files, encrypted to prevent data loss under frequent power failure circumstances.
- Compression stream
Image quality with 8 levels and adjustable
4 Channel SDI 1080P : (1.0Mbps-6.0Mbps/channel)
to meet different requirements.
- Storage
2.5 inch SATA hard disk, 2TB maximum.

2.3 Image quality when monitoring, recording, playback

- Resolution
Monitoring:
4 Channel SDI 1080P: 1920*1080/CH; Recording: 1920*1080/CH; Playback: 1920*1080/CH
- Frequencies

The monitoring, recording and playback are all with 25fps or 30fps

- Horizontal resolution for monitoring
4 Channel SDI 1080P: 1920*1080 / channel
- Horizontal resolution for playback
4 Channel SDI 1080P: 1920*1080/ channel

2.4 Total Resources

4 Channel SDI 1080P:

- Support 4 channels 1080P(1920*1080) simultaneous recording, total 120fps.
- Support 4 channels 1080P(1920*1080) simultaneous playback, total 120fps.

2.5 Alarm pre-recording

- Alarm video mode, alarm pre - recorded more than 5s video, audio, positioning data.

2.6 Full duplex

- Under full loading status, users can index, playback the recorded data with no frame loss.

2.7 Malfunction alarming function

- When the DVR fail to work, the alarm switch is ON, showing alarm information for 5 minutes at least.

2.8 Self-test the status and self-recovery

- When in working status, the “RUN” indicator will constantly flashes and check the device. Recovery will take no more than 3 minutes when device crashes.

2.9 Front-end device control and multi-channel monitor and switch

- The DVR can control PTZ cameras through default protocols (RS-485, PELCO-D, 9600 baud rate),
4 Channel SDI 1080P : 4 channels real time, switchable to monitoring mode.

2.10 Networking

- Combining the CMS software. With built-in 3G/4G module, the car can be monitored remotely.

2.11 Data backup

- To backup the HDD data into computer via HDD card reader.
- Downloading the HDD data remotely through network.
- Transfer the HDD data to computer, download and play the media via our unique DVR player software. Users can also switch the HDD files into universal AVI format to make it workable in other players.

2.12 Authority, encryption, data safety

- Enter the DVR by password, default for “6666”. Data is stored in a special file system to ensure it’s encrypted and safe.

2.13 Log function

- The log includes the alarming and malfunction information, stored into HDD. It can be checked via computer.

3 Features

3.1 Operating system

- Embedded Linux operating system, high stable, free from virus.
- English/ Chinese/ Russian/ Portuguese menu switchable.
- Graphical user interface.

3.2 Compression format

- H.264 format: more excellent frame rate, quality image output.

3.3 Monitoring and Recording

- Monitor:
 - **4 Channel SDI 1080P:** SDI 1080P (1920*1080)
- Record:
 - **4 Channel SDI 1080P:** PAL 100fps, NTSC 120fps, full real-time 4CH 1080P recording.
- Record mode: by alarm, schedule, manual, motion detection.
- Support
 - **4 Channel SDI 1080P :** 4CH video and 4CH audio meanwhile recording.
- Record image quality: 8 levels adjustable.
- Video recorded in special file system to ensure lifespan and safety of HDD.
- Reliable evidence with unchangeable audio/video data.

3.4 Index and Playback

- Index and playback by time.
- Support :
 - **4 Channel SDI 1080P :** 4CH video, 1CH audio (any channel can be chosen), index and playback at the same time, support amplifying in one channel.
- Data only played by DVR playback software.

3.5 HDD storage and data backup

- Support 2.5inch HDD max 2TB.
- The HDD data can be backed up via PC software.
- Support USB backup.

3.6 Control

- Dual MCU control, to ensure DVR stability.
- Support remotely control by remote controller.

3.7 Others

- Upgrade through USB , easy to maintain.
- Protect by password, to avoid data damage.
- Delayed shutdown: default for 5s, adjustable.
- Anti-pulse and low voltage protection.
- Real-time timer.
- Anti-shock for the PCB panel and parts.
- Watch dog function to avoid system crush.

4 Technical Parameters

Device parameters	DVR Performance index
Model	4CH 1080P-SDI
Product Name	4 Channel Mobile DVR(HDD Storage)
Operation System	Linux
Operation Interface	Graphical Interfaces, Chinese/English optional
File System	Proprietary Format
System Privileges	User Password
Video Input	4ch SDI Independent Input: 1.0Vp-p, 75Ω.Both B&W and Color Cameras
Video Output	1 Channel PAL/NTSC Output, 1.0Vp-p, 75Ω, Pin Aviation Connector
	1 Channel VGA Support 1920*1080 , 1280*720 , 1024*768 Resolution
Video Display	1 Or 4 Screen Display
Video Standard	PAL:25frames/Sec;NTSC:30frames/Sec
System Resources	PAL:100 Frames; NTSC:120 Frames

Audio Input	4 Channels Independent Input 600Ω
Audio Output	1 Channel(4 Channels Can Be Convert Freely)
Basic Output Level	1.0—2.2V
Distortion Plus Noise	≤-30dB
Recording Mode	Sound And Image Synchronization
Audio Compression	G711A
Image Compression	H.264 Fixed Code Stream
Image Format	4*1080P (1920*1080)
Video Stream	1.0M-6.0Mbit/s
Video Taking Up Of Hard Disk	450M-2.6GByte/hour
Playback Resolution	1or4*1080P
Audio Bitrate	4KByte / s / channel
Audio Taking Up Of Hard Disk	14MByte / hour / channel
HDD Storage	Support Max 2TB
Image Quality	Eight Grades to Choose
Alarm in	8 Channels Independent Input. High Voltage Trigger
Alarm out	2 Channels Independent output
Move Detect	available
Host Access	Can Expand One For USB Disk Backup
Wire line Access	Can Expand One RJ45 Ethernet Port
Wifi	Can Expand One Wifi Module Inside
3G	Can Expand One FDD-LTE/TD-LTE/WCDMA/CDMA2000 Module Inside

GPS	Can Expand GPS Module Inside
RS232	Extensible,it is convenient to connect with other vehicle equipment
RS485	Extensible,it is convenient to connect with other vehicle equipment and PTZ Camera
Intercom	Can Expand Intercom Module Inside
G-Sensor	Can Expand G-Sensor Module Inside
Canbus	Can Expand Canbus Module Inside
Power Consumption	DC8-36V 5% ≤12W
Working Temperature	-20℃ ~ +85℃ ≤80%
Clock	Built-In Clock, Calendar
Product Size	245(L)*190(W)*71(H)mm (with Holder)
Product Weight	2.8KG(without HDD)
Package	Each In a Box, 5 sets/ Canton
Box Size	245(L)*190(W)* 71(H)mm
Carton Size	650(L)*375(W)* 255(H)mm
Carton Weight	14kgs/ 18kgs (without HDD)

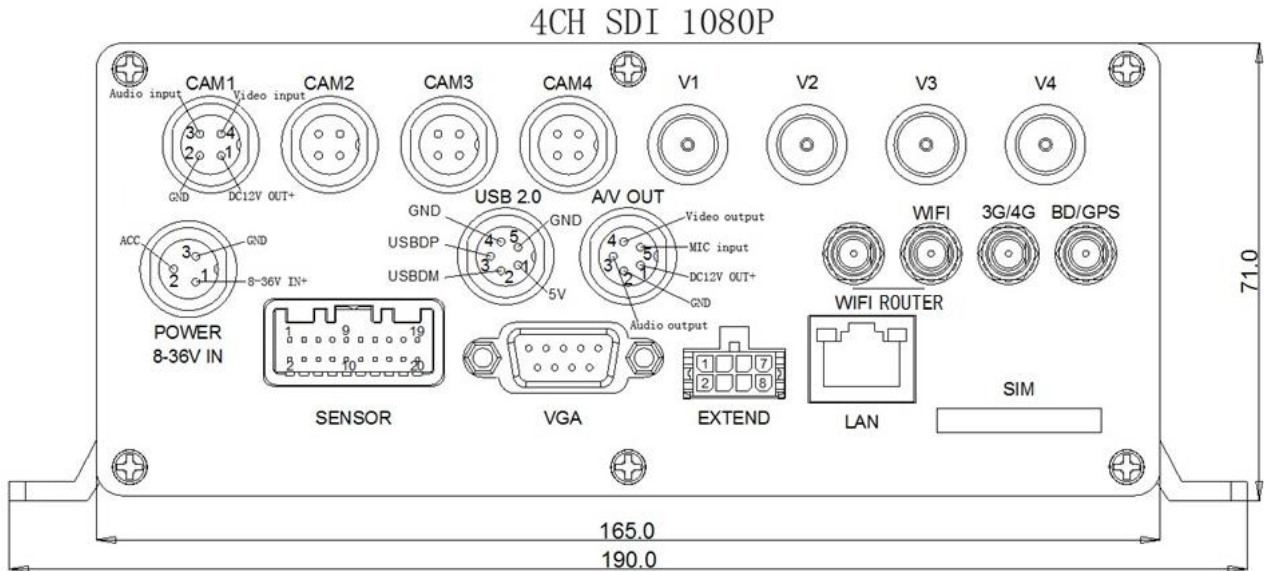
Optional functions:

Basic Type (Pin Aviation Connector)

- | | |
|-------------------|--------------------|
| +A: GPS Function | +B: 3G/4G Function |
| +E: Lan Port | +F: HDD + SD Card |
| +J: Fireproof Box | +K: Canbus |
| +L: Wifi hot-Spot | +P: POE |
| +W: Wifi Function | |

5 Instruction of Installation

5.1 Instruction of External Interface Wiring



SENSOR Interface definition:

1 Canbus+	11 Alarm input 1
2 Canbus-	12 Alarm input 3
3 RS485+	13 Alarm input 2
4 RS485-	14 Alarm input 4
5 Alarm outputCOM1	15 Alarm input GND
6 Alarm outputCOM1	16 Alarm input GND
7 Alarm outputCOM2	17 Alarm input 5
8 Alarm outputCOM2	18 Alarm input 7
9 Alarm input GND	19 Alarm input 6
10 Alarm input GND	20 Alarm input 8

EXTEND Interface definition:

1 DC12V OUT+
2 DC12V OUT-
3 Audio input
4 Audio output
5 RS232 (RX)
6 Video output
7 RS232 (TX)
8 Video/Audio GND

Remarks:

- If the power supply is 12V, then the current of 12V output can be just 1A. So if there are more than 3pcs cameras, we suggest customers to get power for other cameras from the 12V vehicle power directly or use Our special car power supply.
- RS485 、RS232 、LINK、CANBUS interface are optional interface, available only when you listed in the order for this interface.
- Ports:

DEBUG: testing port

EXTEND: intercom connecting port

SENSOR: alarm port

5.2 Instruction of HDD Installation



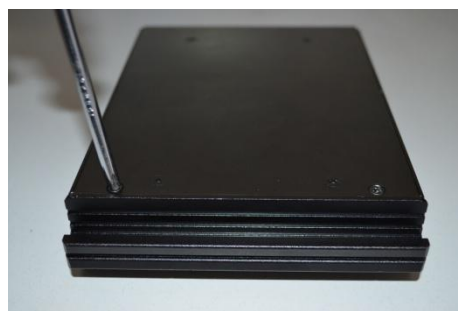
1



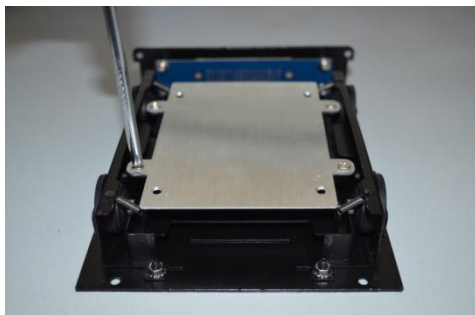
2



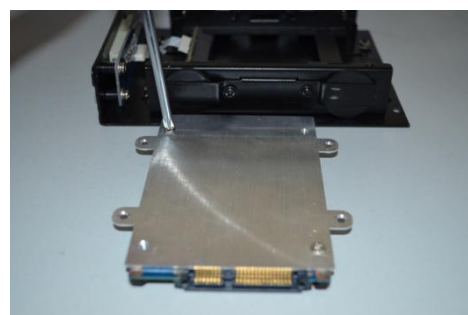
3



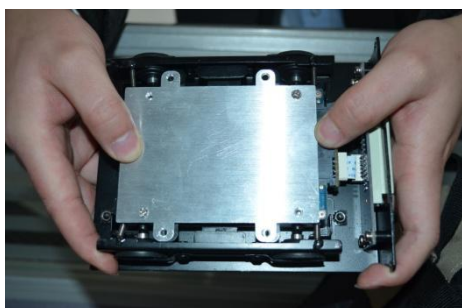
4



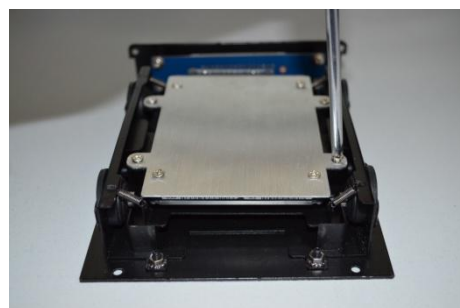
5



6



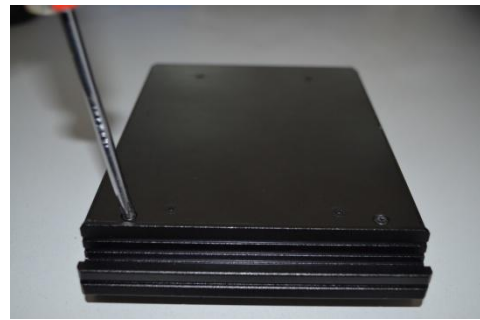
7



8



9



10



11



12

Make sure whether power switch is turned on or turned off, if it is turned on, please use the key, turn the indentation on the “turn off” position.

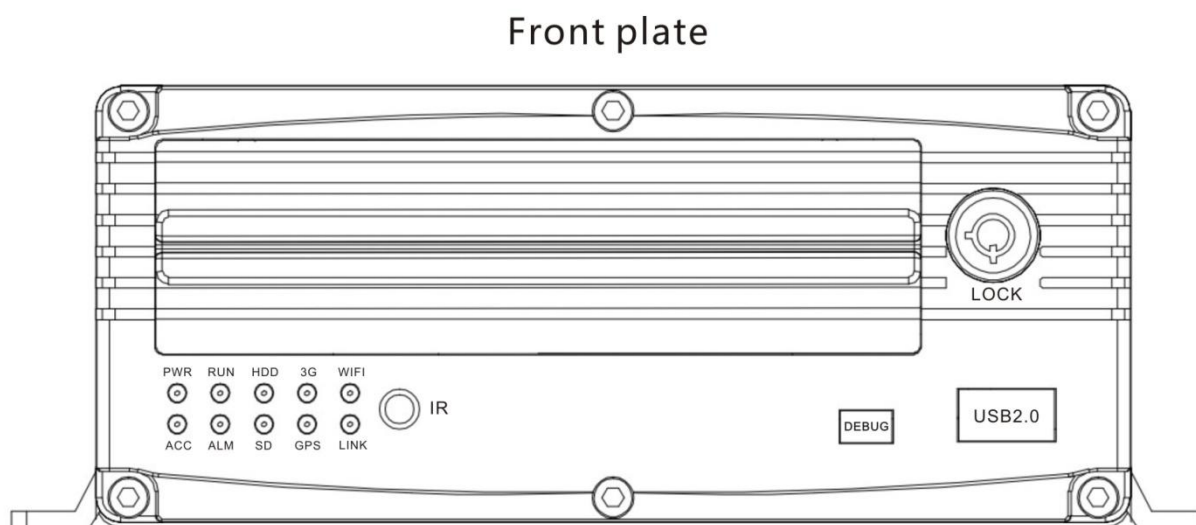
- Pull the front panel of the hard drive box. Carry out the hard drive and drop it on the table.
- Set down the two screws of the hard drive by cross-screwdriver.
- Drop the under backer of hard drive box, and then check the line whether it is on top of the under backer or not.
- Bring here the SATA hard drive which needs installation; connect the line joint of hard drive box to the hard drive. Please note the heading of the line while connecting. Make sure all of the connecting is complete done.
- Put the hard drive in the hard drive box. The obligate line of hard drive needs longer, the line of hard drive needs to lie on the right position.
- Let the four white screws of the machine through the center hole of the four shockproof rubber pads. Fix hard drive on the four holes of hard drive box, do not make the screws too taut, leave a little space for hard drive to move. So it can reach a perfect effect.
- Insert the hard drive under backer which has hard drive to the hard drive top backer, and then, use cross screwdriver and the screw to fix the under backer and the top backer.

- Aimed the hard drive box towards the groove of the front board, level push. Please note the face and back while pushing. Upturn the silk-screen on the right position.
- Wring the lock of the front board by key. Turn the groove on the “turn on” position, lock hard drive box to prevent hard drive from moving out.

Note : Hard drive fixing lock besides fixing the hard drive, also take the place of host power switch .So do this operation, make sure all lines are completely connected. Otherwise, if car’s power have been connected with the standard input voltage, the machine should be destroyed. So while installation, if the line has not been completely connected, please stop to do this step. More careful when installation. The hard drive can not roll out even it has not been locked.

6 Instruction of Using

6.1 Instruction of Front Panel



- **LED**
 - ✓ **PWR LED:** lighting while work starts. Power LED on.
 - ✓ **RUN INDICATOR:** flashing when machine work well
 - ✓ **HDD INDICATOR:** record, play, backup data flashing
 - ✓ **3G INDICATOR:** When with 3G/4G or WIFI module, or with LINK, this led will be on if the settings are all right and the network connects well




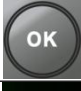




- ✓ **Wifi INDICATOR:** When with WIFI module, it will be on if WIFI module works well.
- ✓ **ACC INDICATOR:** ACC controller signal regularly, it would indicate
- ✓ **ALM INDICATOR:** When have alarm signal, it would be on, when alarm signal disappear it would be off.
- ✓ **SD INDICATOR:** When the model has SD card storage function, SD card read normally then it would indicate.
- ✓ **GPS INDICATOR:** with GPS module, DVR work well indicate
- ✓ **LINK INDICATOR:** when wired network connect normally, it would indicate.














● **Key and Other Descriptions**

- ✓ **DEBUG:** Debug interface.
- ✓ **SIM interface:** 3G/4G interface.
- ✓ **IR:** infrared receiving window.
- ✓ **LOCK:** while removing the hard drive, use the key to unlock in order to remove the hard drive, unlock after machine's auto-disconnects the power, the power auto-connect after being locked.
- ✓ **USB:** backup the video data of hard drive via USB .

NOTE: Recommend to use the SanDisk brand of the USB disk , the minimum volume 256M, must support the FAT32 file system.

6.2 Instruction of Remote Control Operation

		①Lead to menu; ②Return
		Record
		Enter the sub-menu to set and confirm
		Playback on the mobile DVR
		①Stop when recording or playback; ②Delete
		Pause/Play when playback
		Fast-forward when playback video , play speed can be x2, x4, x8, press one time is x2, press two times is x4, and press 3 times is x8.

	Fast Backward when playback video, one press back for 10seconds
	For PTZ wiper (customized)
	Enter PTZ control mode.
	Control PTZ Zoom
	Control PTZ focus
	Mute key, to turn on or turn off audio output when playback videos with audio.(The audio input of the playback device must be connected to the audio output of the DVR.)
	① Exit when video playback or backup. ② Exit from PTZ mode.
	① Upward for MENU selection. ② "UP" direction for PTZ control mode.
	① Downward for MENU selection. ② "Down" direction for PTZ control mode.
	① Towards to left for MENU selection or MENU setup. ② "Left" direction for PTZ control mode.
	① Towards to right for MENU selection or MENU setup. ② "Right" direction for PTZ control mode.
	①screen zoom the first channel video when surveillance, record ② Enter password or set system password. ③shortcut keys, press the first key shortcut to switch the number 1, press the second key shortcut to switch the capital letter a, press the third key shortcut toggles the lowercase letters a, press the up and down keys to change value.
	① 4 channel display when surveillance, record and playback. ② Enter password or set system password.

	Other numbers button	Press 1, 2, 3, 4, 5, 6, 7, 8 switch to CH1, CH2, CH3, CH4, CH5, CH6, CH7, CH8
	Other buttons	Not mentioned buttons, not in use.


Remark: When the DVR is in alarm condition, the remote control is invalid.

6.3 Menu Setting Instruction:

(Our company system support remote control and mouse to operation, This document introduces the operation of the remote control, the left click of mouse means to confirm or enter, and the right click means exit or return)

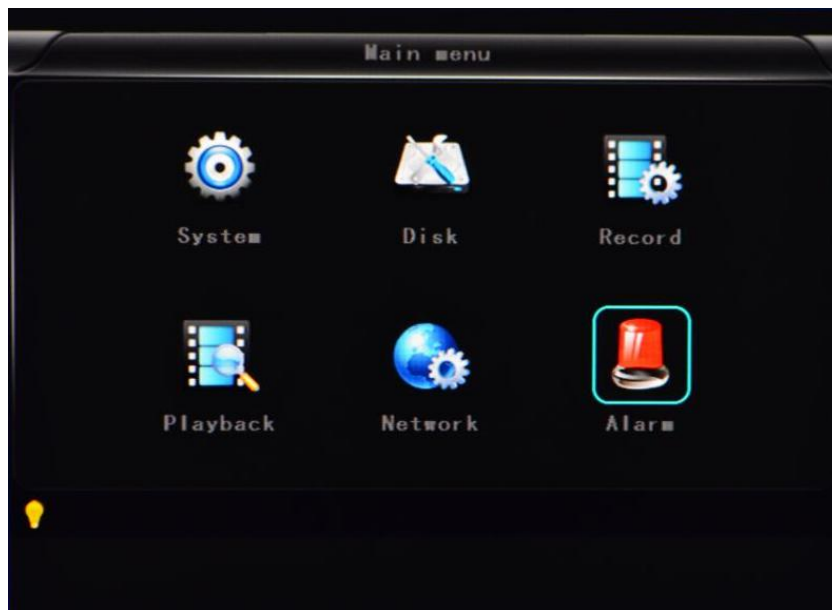
First press "  "key, then press "  " to enter the default password"6666",



then press "  "to enter the main menu interface;

There are "System"、"Disk"、"Record"、"Playback"、"Network" and "Alarm" options, select the option by

pressing these buttons "  、  、  、  " ,then press "  "to enter.



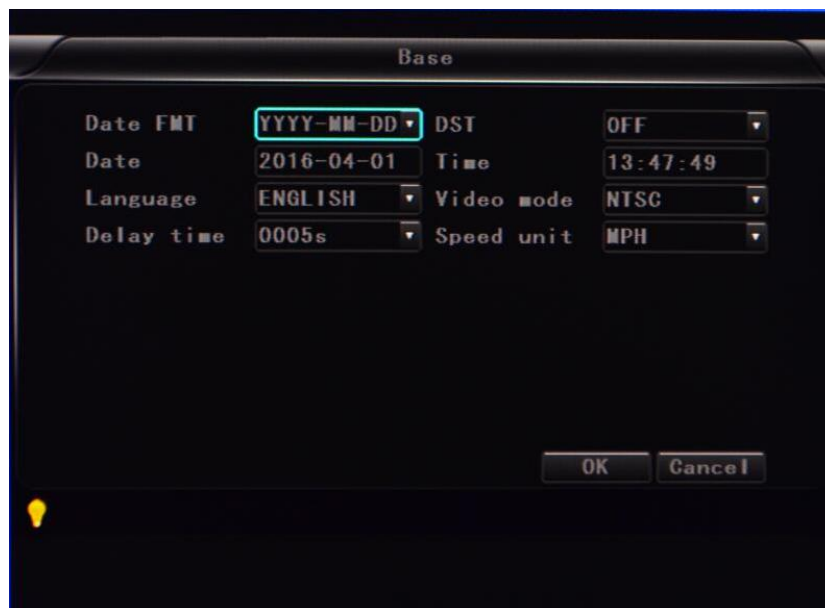
- **System Settings:** includes options of “Setup”, “Vehicle”, “Other”, “System info”, “Log”, “Config” .



- **Setup setting:** includes options of “Base”, “User”, “Serinal”, “PTZ”, “GPS”, “G-sensor” and “NTP”



- **Base setting:** Set the System time, TV system, Language, etc.



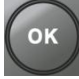








- ✓ **Date format:** Offer 3 display methods like “y/m/d, m/d/y, d/m/y” for personal habit.
- ✓ **Daylight saving time:** suitable for according countries or areas.
- ✓ **Date:** Adjust the date of HDD recorder
- ✓ **Time:** Adjust the time of HDD recorder
- ✓ **Language:** Set "Chinese", "English", "Portuguese", "Russian" and "French", have to restart the DVR after setting.
- ✓ **Video Mode:** Set "PAL" or "NTSC", have to restart the DVR after setting.
- ✓ **Delay Time:** DVR Time-lapse turn off function after the car ignition off, the default time is 5S, and 30s,1min,2min,5min,10min,20min,30min,2hour,4hour, The longest time is 24 hours, all could be

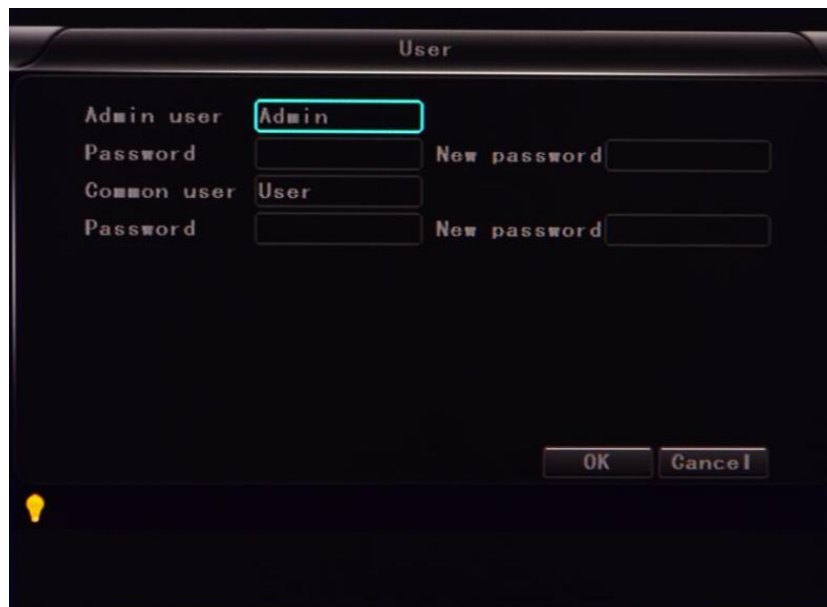
set, have to restart the DVR after setting.

(Note: Select  to save parameters, select  don't save parameters)

Operating Way:

Enter the menu, press“、”to select the options ,then press“”to enter the modification mode, adjust the number by pressing“、、、”, press“”to save after adjustment. Press””key to exit after all settings done.

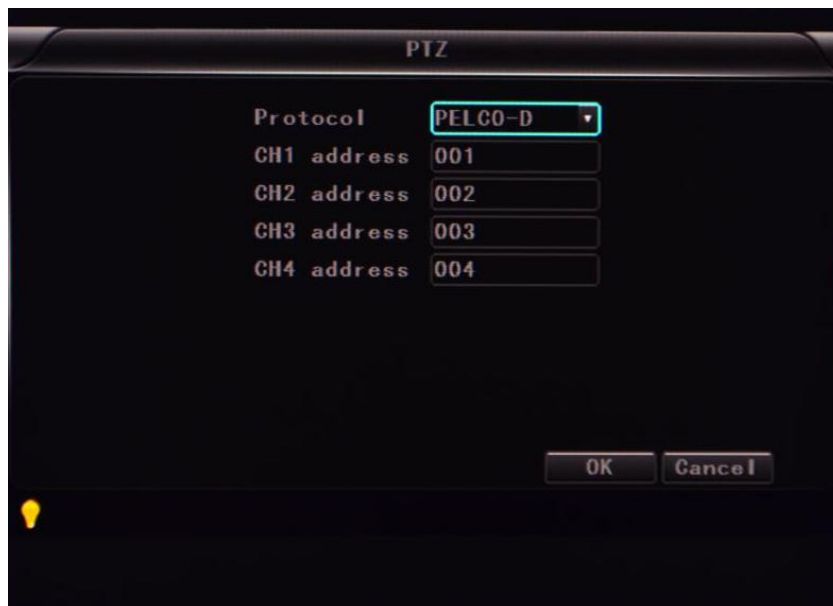
- **User settings:** Set up the user name and password of administrator and common.



- ✓ **Admin user:** set up the user name of administrator
- ✓ **Password:** Enter the default password before changing the new password.
- ✓ **New password:** Enter the new password.
- ✓ **Common user:** set up the user name of common.
- ✓ **Password:** Enter the default password before changing the new password.
- ✓ **New password:** Enter the new password.
- **Serial setting:** this is Serial setting to set up the communication protocol with external equipment.



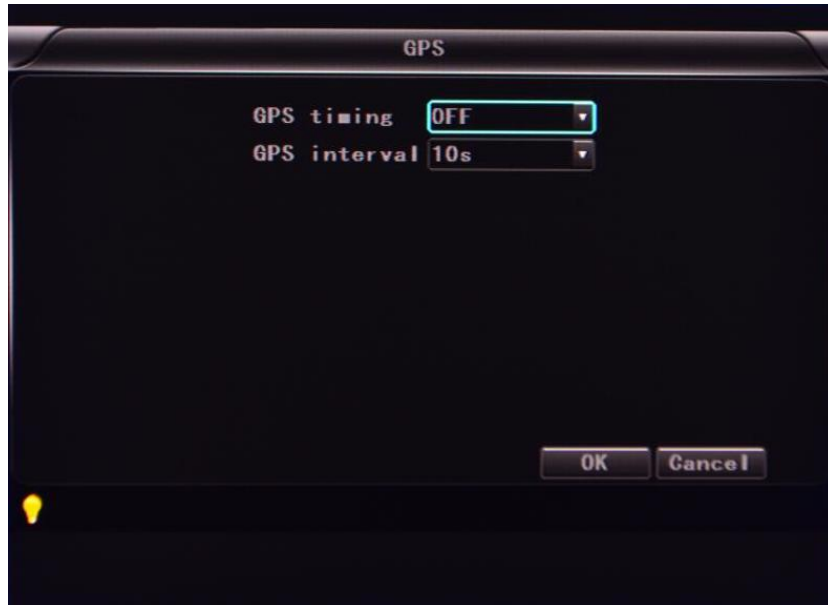
- ✓ **RS232 set:** support dispatch, led panel, ID card, OBD, person count.
- ✓ **Bitrate:** support 2400bps,4800bps,9600bps,19200bps and 38400bps.
- ✓ **Data bit:** the default value is 8.
- ✓ **Stop bit:** the default value is 1.
- ✓ **Verify:** the default value is none.
- ✓ **RTS/CTS:** the default value is nont.
- ✓ **RS485 set:** support PTZ, led screen, oil sensor, ID card, OBD, person count.
- ✓ **Bitrate:** support 2400bps,4800bps,9600bps,19200bps and 38400bps.
- **PTZ setting:** Adjust and control the camera with external PTZ device.



- ✓ **Protocols:** default PELCO-D, support PELCO-D.PELCO-P.
- ✓ **Channel-Address:** Channel one-Device address.

- ✓ **Channe2-Address:** Channel two-Device address.
- ✓ **Channe3-Address:** Channel three-Device address.
- ✓ **Channe4-Address:** Channel four-Device address.

- **GPS setting:**



- ✓ **Time zone:** different by countries, e.g: China for UTC+08
- ✓ **GPS Interval:** GPS Data upload interval, used with other system interface.

- **G-sensor setting:**



- ✓ **G Sensor-X:** 2000mg(default value, this value will change accordingly if the X direction gravity accelerated speed value is changeable).
- ✓ **G Sensor-Y:** 2000mg(default value, this value will change accordingly if the Y direction gravity accelerated speed value changeable).

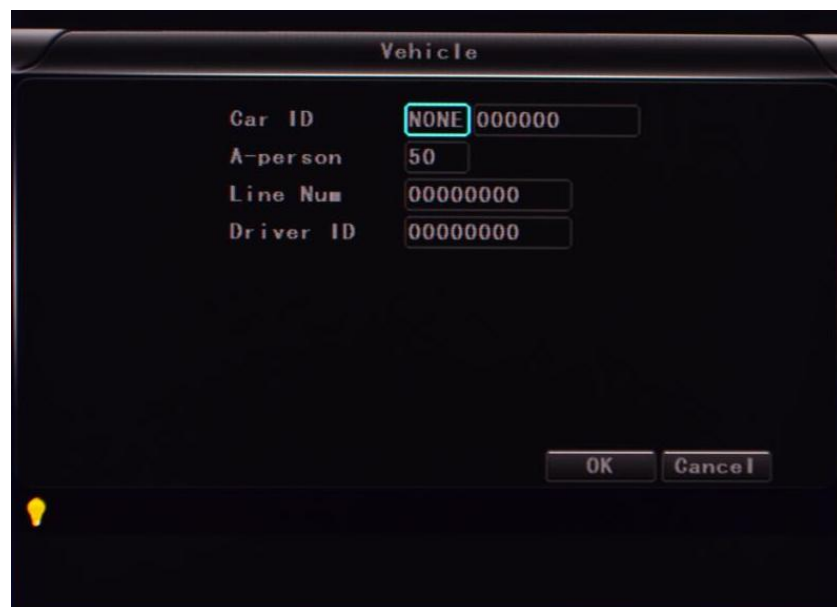
- ✓ **G Sensor-Z:** 2000mg(default value, this value will change accordingly if the Z direction gravity accelerated speed value is changeable).

(note: Press the **Adjust** to adjust G-sensor parameters when first installed)

- **NTP setting:**



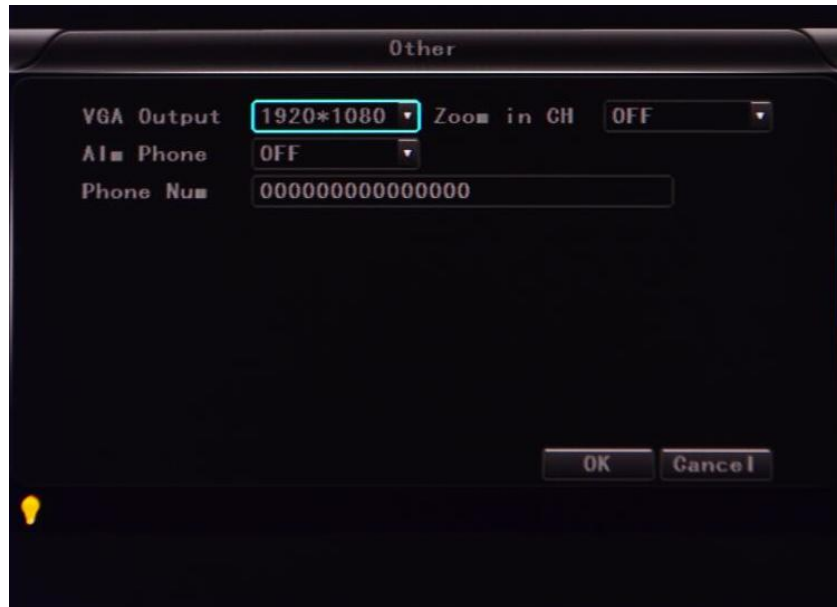
- ✓ **NTP server:** the NTP server ip
- ✓ **Server port:** default port is 123
- ✓ **NTP timing:** different by countries, e.g: China for UTC+08
- ✓ **NTP Interval:** time data upload interval, used with NTP server.
- **Vehicle information:** details of car plate number, route and driver code.



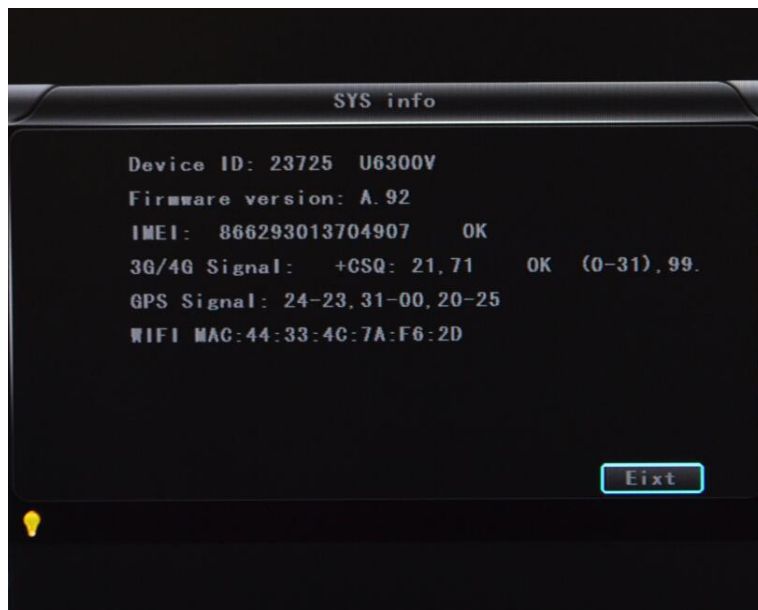
- ✓ **Car ID:** can be showed by English, Chinese simplified language, Numbers or common

symbols.

- ✓ **A-person:** setup the original carried person for the vehicles.
- ✓ **Line Num:** the driving route and code.
- ✓ **Driver ID:** set up the driver code information.
- **Other information:**



- ✓ **VGA Output:** 1920*1080,1280*720,1024*768,no output
- ✓ **Zoom in CH:** Choosing which channel to see when power on each time. This is also useful when backing the car. Eg .when you choose CH 1 as the Zoom , when you start the device , it will show CH1 in the whole screen .
- ✓ **Alarm Phone:** set the action of alarm or not.
- ✓ **Phone number:** click alarm function, set the phone number for alarm.
- **System information:** Display DVR hardware code number , software version information(only view, couldn't be changed)



- ✓ **Device encoding:** only for this DVR, the code is unique.
 - ✓ **Software version:** the version No. of DVR software.
 - ✓ **IMIE:** IMIE No. of 3G/4G network or module
 - ✓ **Strength of 3G/4G signal:** strength value:99, unknown: 0-31
 - ✓ **Strength of GPS signal:** AA-BB(AA: GPS No ;BB: GPS strength. Show signal strength of max3).
 - ✓ **WIFI MAC:** the MAC address
- **LOG information**



- ✓ **Log type:** User action log, alarm logging, equipment status log.
- **Configuration management**

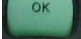


- ✓ **Import:** Import the configuration parameters
- ✓ **Export:** Export the configuration parameters
- ✓ **Renew:** Restore the factory parameter

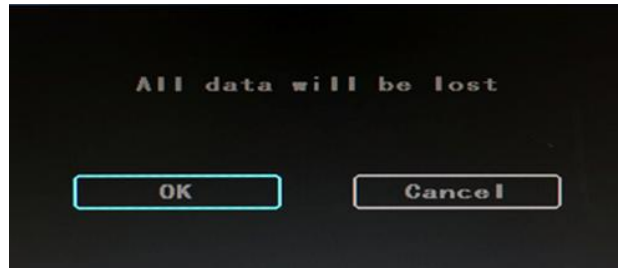
■ **Disk:** Check and format



- ✓ **Disk Name:** Display the system recognized HDD name.
- ✓ **Overwrite:** Choose on and off
- ✓ **Total Size:** Display the total size of HDD.
- ✓ **Free Size:** Display the remaining Capacity of HDD.
- ✓ **Free record time:** It is only an estimate.
- ✓ **Format:** Format HDD(only format the head files of HDD) .

Select this item, there is a format interface after press "", confirm to format, cancel to return

the original interface.



- **Record:** the video files setting, It includes "codec", "channel" and "record plan".



- **Codec:**



- ✓ **Channel:** select the channel setting (the information of each channel could be set independently)
- ✓ **Resolution:** CIF/HD1/D1/960H/720p/1080p;

The left side is the local storage information,

The right side is network transmission information; local "CIF,HD1,D1" is optional, only "CIF" for

network transmission.

- ✓ **Frame:** 1-25/30fps

The left side is local storage information,

The right side is network transmission information.

Stream mode: Constants Bit Rate and Variable Bit Rate.

- ✓ **Quality:** Video quality setting

The left side is the local video quality(total 10 grades,

192kbps/320kbs/512kbps/768kbps/1Mbps/1.2Mbps/1.5bps/2Mbps/3Mbps/4Mbps)

The right side is the network transmission quality(total 13 grades,

32kbps/48kbs/64kbps/80kbps/112kbps/144kbps/192kbps/256kbps/320kbps/384kbps/512kbps/768kbps/1024kbps)

- ✓ **Audio:** Select to record audio or without audio.

- ✓ **JPEG:** set captured of time and interval, Select a Trigger for alarm triggering to capture, choice time 10s, 30s, 60s, 120s, 300s.

- ✓ **Input mode:** Analog, AHD, SDI or IPC

- ✓ **Copy to all:** Copy to all channels

Note: save after finished video parameter setting (have to restart the DVR after setting.)

- **Channel:**



- ✓ **Channel:** select the channel setting (the information of each channel could be set independently)

- ✓ **Channel name:** the name of each channel

- ✓ **OSD:** choose to add the character information or not.
- ✓ **Copy to all:** Copy to all channels
- **Record plan**



- ✓ **Channel:** select the channel setting (the information of each channel could be set independently)
- ✓ **Record mode:** real time and event or no record
- ✓ **File length:** the packaged video files length setting (5/10/15/25/30/60 minutes optional)
- ✓ **Prerecord:** Before the alarm recording time(no,5s,10,15s)
- ✓ **Event REC time:** Alarm-triggered video duration (30-330s optional, 30s unit) .
- ✓ **Schedule:** the timer is timing recording, the alarm is alarm recording.
- ✓ **Copy to all:** Copy to all channels.
- ✓ **Save:** save after finishing video parameter setting (have to restart the DVR after setting.)

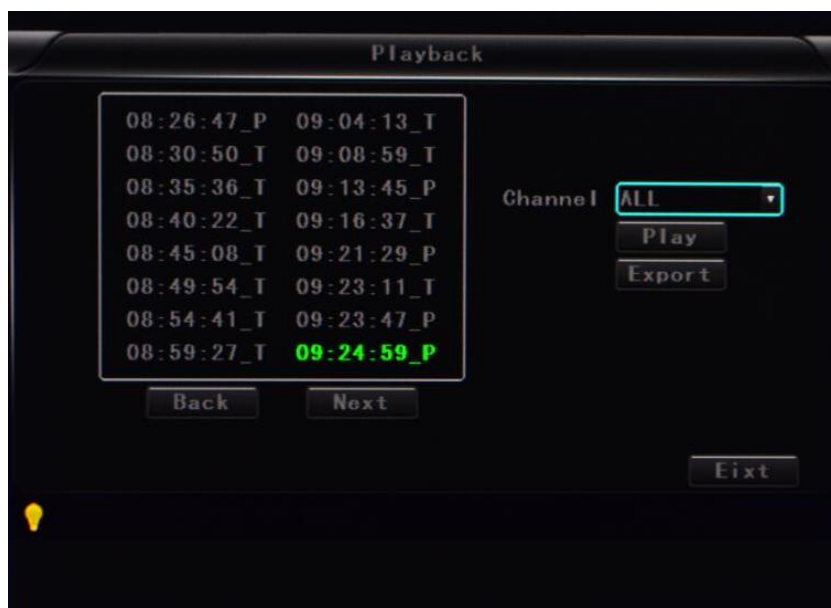
The operating method is similar to the "basic settings" operating

- **Playback:** the recorded video Playback



There is video date in the menu, it will show the video time after press "Search", choose the playback time range according to require time ,then press "Play" button to replay the video.

File format suffix "_P" is power off video file , suffix "_S" indicates an alarm trigger video files, suffix "_T" indicates an timing video files.



- ✓ **Channel:** 1CH/4CH/8CH/12CH Video playback; video playback on each channel or full screen, playback and record simultaneously
- ✓ **Play:** Select the video files and channel to replay
- ✓ **Export:** Select the HDD video files backup to USB Disk

The operating method refers to "local video playback instruction"

■ **Network Setting: LAN, 3G, WIFI, IPC**



- ✓ **LAN:** connecting via RJ45.
- ✓ **3G/4G:** insert 3G/4G SIM card into the slot.
- ✓ **WIFI:** connecting the network of WIFI.
- ✓ **IPC:** To connect the IPC camera Settings.
- ✓ **SIP:** Chinese goverment standard platform
- ✓ **CH ID:** Chinese goverment standard platform infomation

- **Local Network Setting (LAN):**



- ✓ **Network Type:** LAN and 3G/4G-WIFI optional.
- ✓ **DHCP:** Automatically get the IP address(in order not conflict with the LAN, please enable ON, and also enable DHCP on the router, P.S, only one DHCP server can be enable in one LAN).

-
- ✓ **Static IP:** setup under LAN and WIFI mode.
 - ✓ **Net mask:** Subnet mask under LAN or WIFI mode.
 - ✓ **Gateway:** gateway under LAN or WIFI mode.
 - ✓ **DNS:** please input when the server IP is DNS, and not necessary when IP is static.
 - ✓ **Server IP:** If the units login on our server, please use cvideoview.com, and if the units login on your own server, please use yours.
 - ✓ **Server Port:** Keep it as default of 8101.
- **3G Network Setting:**
 - ✓ **Net type:** select 3G-WIFI if you are going to use 3G mode.
 - ✓ **DHCP:** ON



- ✓ Access into “**Network**”→”**3G**”



-
- ✓ **APN:** Access Point Name.
 - ✓ **Dialup Num:** Get this info from your carrier.
 - ✓ **User Name:** Fill in if you have.
 - ✓ **Password:** Fill in if you have.

Note: please make sure you select the proper SIM card fit for 3G/4G module.

- **WIFI Setting:**

- ✓ **Net type:** Select 3G-WIFI when the type is under LAN.
- ✓ **DHCP:** ON



- ✓ Access Network setup → "WIFI"



- ✓ **SSID:** WIFI router device name.

- ✓ **Password:** using password for SSID.
- ✓ **Certificate:** Support both “WPA-PSK” and “WPA2-PSK”.
- ✓ **Encryption:** Support both “CCMP” and ”TKIP”.

Access router, check its “WIFI “encryption.

WIRELESS SECURITY MODE

To protect your privacy you can configure wireless security features. This device supports three wireless security modes, including WEP, WPA-Personal, and WPA-Enterprise. WEP is the original wireless encryption standard. WPA provides a higher level of security. WPA-Personal does not require an authentication server. The WPA-Enterprise option requires an external RADIUS server.

Security Mode : WPA-Personal ▼

SETUP COMPLETE!

Below is a detailed summary of your wireless security settings. Please print this page out, or write the information on a piece of paper, so you can configure the correct settings on your wireless client adapters.

Wireless Band : 2.4GHz Band

Wireless Network Name dlink
(SSID) :

Security Mode 2 : Auto (WPA or WPA2) - Personal

Cipher Type : TKIP and AES

Pre-Shared Key :

c47086bee2659742883d5bb36da53356e51407f1635855aa7cbef92b5598bf6c

Notes:

Please make sure the router WIFI encryption keep the same with the setup in MDVR if the units use WIFI.

- **IPC Setting**(This function can only suit for Mobile NVR)

IPC

Channel	CH1 ▼	Time Sync	<input checked="" type="checkbox"/>
IPC Addr	192.168.002.075	IPC Port	80
User Name	admin	Password	admin

192.168.2.83:8899	192.168.2.142:8899	192.168.2.75:80
192.168.2.117:80	192.168.2.220:80	192.168.2.150:80

Search IPC end!

Search
Save
OK
Cancel

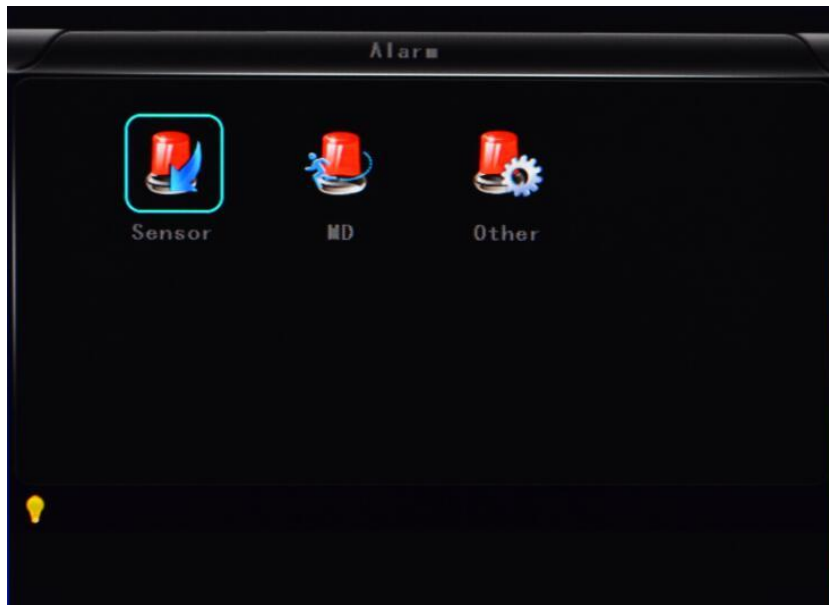
- ✓ **Channel:** main channel , different channel set can choose.
- ✓ **Time Sync:** turn on/off means if open the time synchronization between ipc and device.

-
- ✓ **IPC Addr:** put and modify ipc address when the ip camera and device in one network area.
 - ✓ **IPC Port:** the device port which connect with ip camera.
 - ✓ **User Name:** the user name which connect with ip camera.
 - ✓ **Password:** the user names password
 - ✓ **Search:** it is can search the local network ipc when click the search button
 - ✓ **Save:** click the save button to keep the sets after set

Note: the network type must be changed to LAN when connect with ipc.

- **SIP:** Foreign users can't use this standard, it's just suit for chinese client .
- **CH ID:** Foreign users can't use this standard, it's just suit for chinese client .

■ **Alarm setting** : Sensor alarm, Motion detecting alarm and other alarm setting



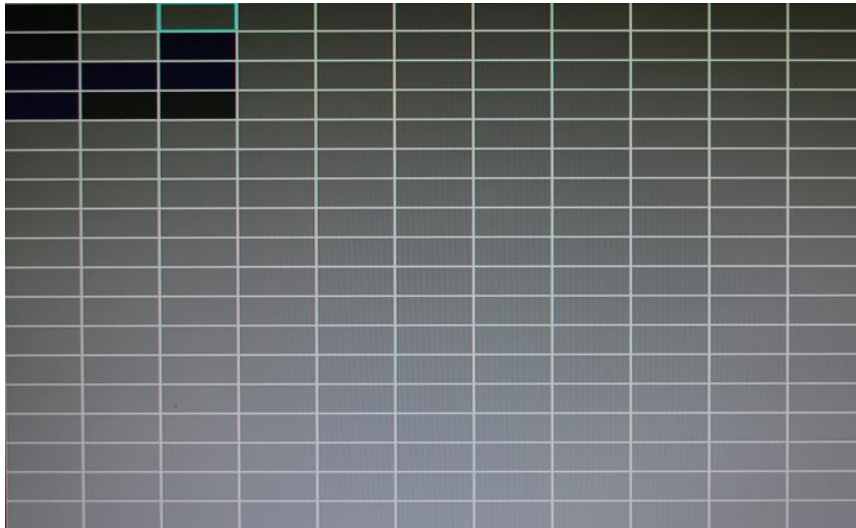
- ✓ **Sensor:** An external sensor alarms.
- ✓ **MD:** Motion detecting alarm.
- ✓ **Other:** other alarm setting.
- **Sensor Setting**



- ✓ **Channel:** main channel , different channel set can choose.
 - ✓ **Enable:** turn on/off means if open the sensor alarm.
 - ✓ **Sensor Name:** put and modify the name of sensor.
 - ✓ **Trigger level:** High or low level trigger the alarm.
 - ✓ **linkage:** Set up ON/ OFF video linkage function.
 - ✓ **OSD:** Choose whether to overlay alarm information.
 - ✓ **Lock:** Won't cover this alarm video after choose this lock.
 - ✓ **Alarm:** Choose whether to overlay alarm information.
 - ✓ **Alarm Out:** Choose whether to alarm out .
 - ✓ **Save:** click the save button to keep the sets after reboot
- **MD:** Motion detecting alarm.

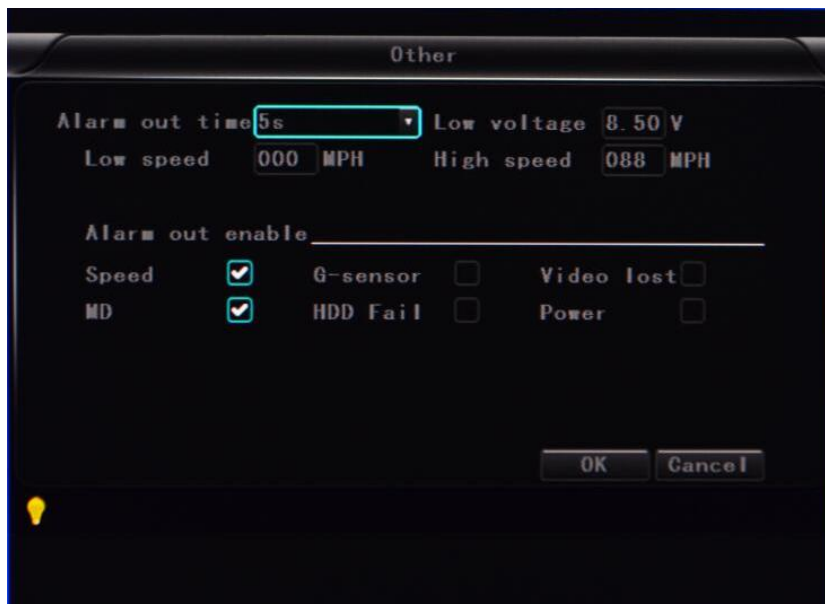


- ✓ **Channel:** main channel , different channel set can choose.
- ✓ **Enable:** Open and close motion detect record and motion detect sensitivity selection such as “off”, “high”, “low”. Opening motion detect recording, also need to set the icon “S”(alarm record)for time range of the detect record in “Record Setting” status except select “High” ,“Low” . “High” ,“Low” is the grade of detect sensitivity, higher grade record easier.
- ✓ **Area setup**



: No detect
 : Low sensitivity
 : High sensitivity

- **Other:** other alarm setting.



- ✓ **Alarm out time:** Alarm output time (5s-900s).
- ✓ **Low voltage:** The low voltage alarm about car battery.
- ✓ **Low speed:** The low speed alarm.
- ✓ **High speed:** The high speed alarm.

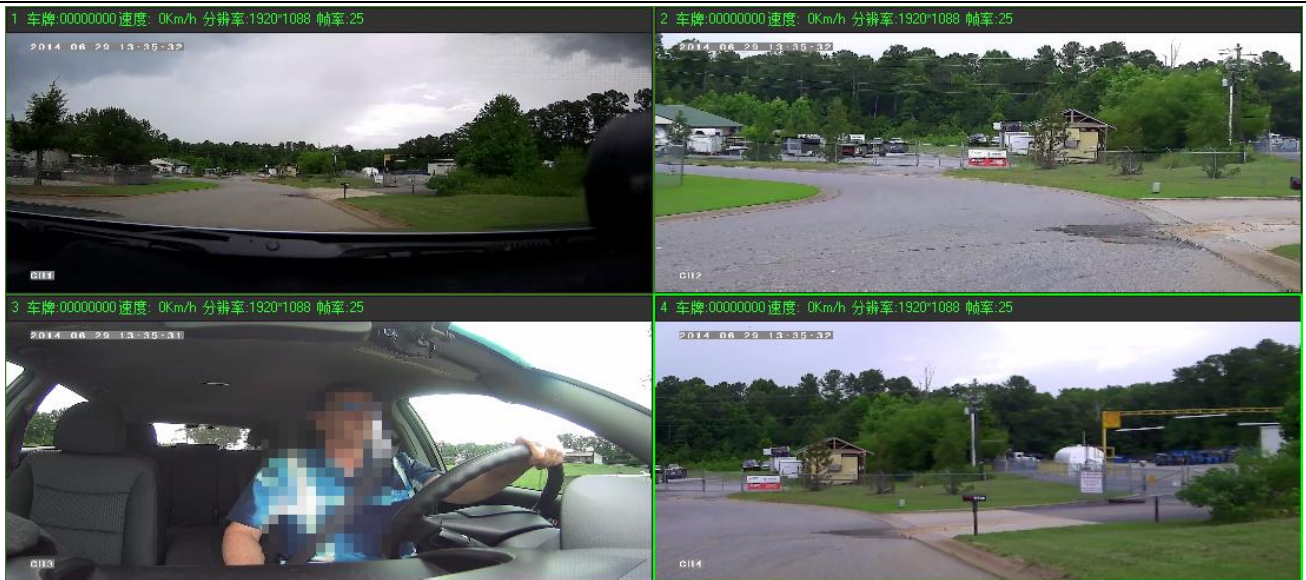
- ✓ **Alarm out enable:** setup the types of alarms linkage, speed, G-sensor, video lost, Motion detecting alarm, HDD fail, power.

6.4 DVR Video Playback Instruction

Our company System support 2 video playback ways.



- 1) Users can watch the video playback with the IR remote control, the specific steps are as follows:

Enter the main menu, move to “playback” option ,press “”to enter, next press the key “”or “”to select the playback date ,and move to “Search”, then press “”key to display the video files of the selected date(file named by the record time),same press “”or“” again to select the time to play. If your required time is not available in the current page, press “”or“”key to the next page, till you find the required time, then press “”key to move the option “play channel”, again press “”to select the playback channel. If you need to reselect the files, press keys“”or“”to repeat the previous steps to select again, then press“”.Press “”or“”to select the replay channel, then press“”or press “” to button “play” ,next press “”to replay, the system will switch to the video playback status, you can see the playback video in the selected channel. Press “”、、、”keys to switch the channel, and press “”back to the quad screen. Press“”to stop, press again for replay. Press“”to exit and back to 4ch record status, press “”and back to the “search/playback” interface, then press “”or“”to select other video playback.



2) User can watch the video playback with the mouse, the specific steps are as follows:
Enter the main menu, Click on the “playback” option to enter, next select the playback date, file type and time frame ,then press “Search” to display the video files of the selected date(file named by the record time).After selected the time and channel , press “Play” to play. If your required time is not available in the current page, press “Back” or “Next” to the other page, till you find the required time.




User press “” on the playback interface, and then use the mouse to click” ”to implement different functions, such as: before, stop, play, pause, a frame play, fast forward, next and audio(each channel).

6.5 Video Backup

Our company System support 2 video backup ways.

1) Connect the USB disk to the DVR’s USB port for backup (Ports on Demand); Operating method as follows:

- Connect USB disk to the DVR’s USB port (FAT32 format, backup Max.20G).
- On the video playback interface, select the backup video files first, then move to “Export” option, and press “OK ”to backup, “Export END” display after backup finished, the USB disk could be taken away, then press” ”to exit if no other operations.

- If you need to backup another files, press“ ”to repeat the previous steps to backup.

2) Take the HDD box out from DVR, then connect the HDD reader to the PC, you can check the video playback on PC via the installed our company’s local playback analysis software .(Suitable for large amount data backup, simple and flexible. The proprietary data files also could be converted to the common format, suitable for different reading demands). Specifics refer to the local playback analysis

software instruction).

6.6 PTZ control

This function just used to has PTZ function models, there is two ways. Operations are as followings:

- 1) User can control PTZ camera with the IR remote control, the specific steps are as follows:

When DVR is working, click "PTZ", entre "PTZ control "mode, If DVR has connect with screen, then on screen's left above would show "PTZ", click "▲", "▼", "◀", "▶", PTZ would scroll as it showes, the PTZ camera would rotate after each command by clicking PTZ icon in the CMS or operating the control board; Control over if wanna quit at all, click "ESC".

- 2) User can control PTZ camera with the mouse, the specific steps are as follows:

When DVR is working, Click the mouse left button, then the screen would show this picture "MAIN MENU", click "PTZ", There is PTZ control icon would display, the PTZ camera would rotate after each command by clicking PTZ icon; the PTZ control icon will be displayed on the channel which your mouse to click; Control over if want to quit at all, click the mouse right button.



6.7 Video Data Volume

The required volumes of video and video-related settings , please see the following table:

4 CH SDI 1080P			4CH 960H			8CH 960H		12CH 960H		
VIDEO QUALITY	Total Record Frame	Data Size Per Hour	VIDEO QUALITY	Total Record Frame	VIDEO QUALITY	Total Record Frame	Data Size Per Hour	VIDEO QUALITY	Total Record Frame	Data Size Per Hour

6.0 Mbps	100 frame	10.8GB	2.0 Mbps	100 frame	3.6GB	200 frame	7.2GB	2.0 Mbps	300 frame	10.8GB
5.5 Mbps	100 frame	9.9GB	1.5 Mbps	100 frame	2.65GB	200 frame	5.3GB	1.5 Mbps	300 frame	7.95GB
5.0 Mbps	100 frame	9.0GB	1.2 Mbps	100 frame	2.1GB	200 frame	4.2GB	1.2 Mbps	300 frame	6.3 GB
4.5 Mbps	100 frame	8.1GB	1.0 Mbps	100 frame	1.8GB	200 frame	3.6GB	1.0 Mbps	300 frame	5.4 GB
4.0 Mbps	100 frame	7.2GB	768 Kbps	100 frame	1.35GB	200 frame	2.7GB	768 Kbps	300 frame	4.05GB
3.0 Mbps	100 frame	5.4GB	512 Kbps	100 frame	0.9GB	200 frame	1.8GB	512 Kbps	300 frame	2.7 GB
2.0 Mbps	100 frame	3.6GB	320 Kbps	100 frame	0.55GB	200 frame	1.1GB	320 Kbps	300 frame	1.65GB
1.0 Mbps	100 frame	1.8GB	192 Kbps	100 frame	0.335GB	200 frame	0.67GB	192 Kbps	300 frame	1.01GB

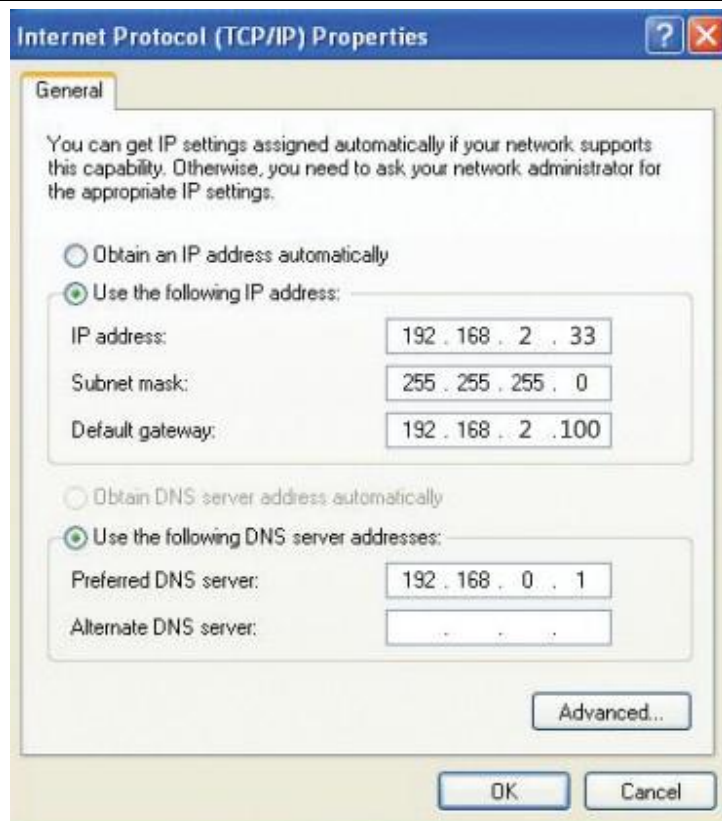
Note: Based on users matching conditions to apply the appropriate drive and related settings.

4CH 1080P-NVR			8CH 720P-NVR			12CH 720P-NVR		
VIDEO QUALITY	Total Record Frame	Data Size Per Hour	VIDEO QUALITY	Total Record Frame	Data Size Per Hour	VIDEO QUALITY	Total Record Frame	Data Size Per Hour
2.0 Mbps	100frame	6.1GB	2.0 Mbps	200frame	10.32GB	2.0 Mbps	300frame	15.48GB
1.5 Mbps	100frame	4.58GB	1.5 Mbps	200frame	7.74GB	1.5 Mbps	300frame	11.61GB
1.2 Mbps	100frame	3.65GB	1.2 Mbps	200frame	6.18GB	1.2 Mbps	300frame	9.27GB
1.0 Mbps	100frame	3.05GB	1.0 Mbps	200frame	5.16GB	1.0 Mbps	300frame	7.74GB
768 Kbps	100frame	2.3GB	768 Kbps	200frame	3.86GB	768 Kbps	300frame	5.79GB
512 Kbps	100frame	1.5GB	512 Kbps	200frame	2.58GB	512 Kbps	300frame	3.87GB
320 Kbps	100frame	1GB	320 Kbps	200frame	1.62GB	320 Kbps	300frame	2.43GB
192 Kbps	100frame	0.58GB	192 Kbps	200frame	0.96GB	192 Kbps	300frame	1.44GB

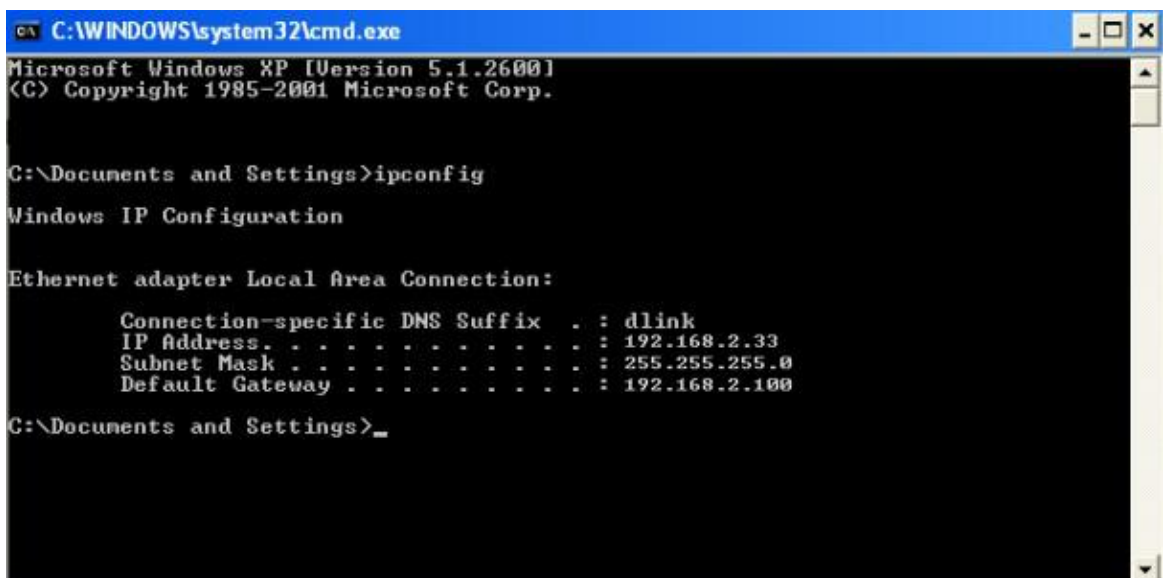
Note: Based on users matching conditions to apply the appropriate drive and related settings.

6.8 Extranet Port Mapping

- ✓ Install the CMS server in LAN, please refer to the manual how to install CMS server.
- ✓ First, make sure the PC which installed the server use **Static Public IP**, not automatically get.



- ✓ Access into “**Program**”→”**Run**”→”**CMD**”, fill in “ipconfig”→”Enter” to see if the server IP has been set successfully.

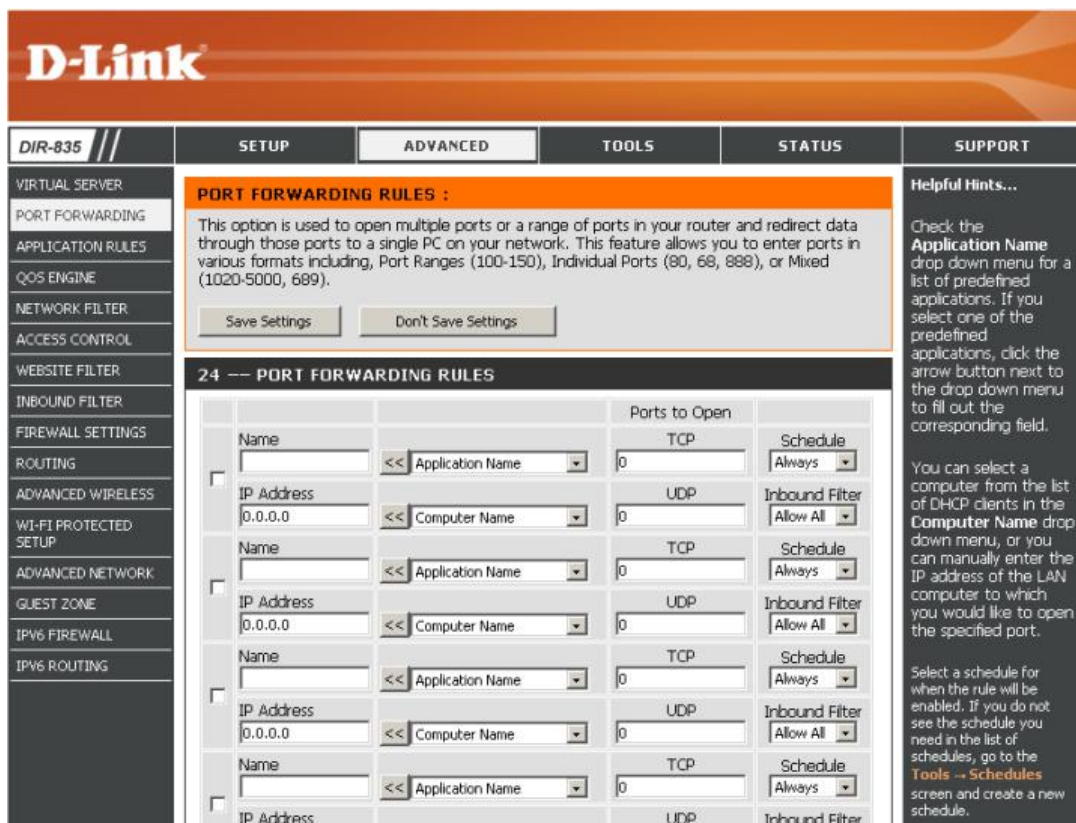


- ✓ Open the file of “DVR_Server.cfg” in the server installation path, can check whether the ports have been set successfully.

Port: 8001, 9001, 8101



- ✓ Access into router→“Advanced”→“Port forwarding”:



- ✓ Add the ports of 8001, 8101, 9001 to the port forwarding.

D-Link

DIR-835 // SETUP ADVANCED TOOLS STATUS SUPPORT

PORT FORWARDING RULES :

This option is used to open multiple ports or a range of ports in your router and redirect data through those ports to a single PC on your network. This feature allows you to enter ports in various formats including, Port Ranges (100-150), Individual Ports (80, 68, 888), or Mixed (1020-5000, 689).

Save Settings Don't Save Settings

24 — PORT FORWARDING RULES

	Name	Application Name	Ports to Open	Schedule	Inbound Filter
<input checked="" type="checkbox"/>	DVR	<< Application Name	TCP 9001	Always	Allow All
	IP Address	<< Computer Name	UDP 9001		Allow All
<input checked="" type="checkbox"/>	DVR	<< Application Name	TCP 8101	Always	Allow All
	IP Address	<< Computer Name	UDP 8101		Allow All
<input checked="" type="checkbox"/>	DVR	<< Application Name	TCP 8001	Always	Allow All
	IP Address	<< Computer Name	UDP 8001		Allow All
<input type="checkbox"/>		<< Application Name	TCP 0	Always	Allow All
	IP Address		UDP		

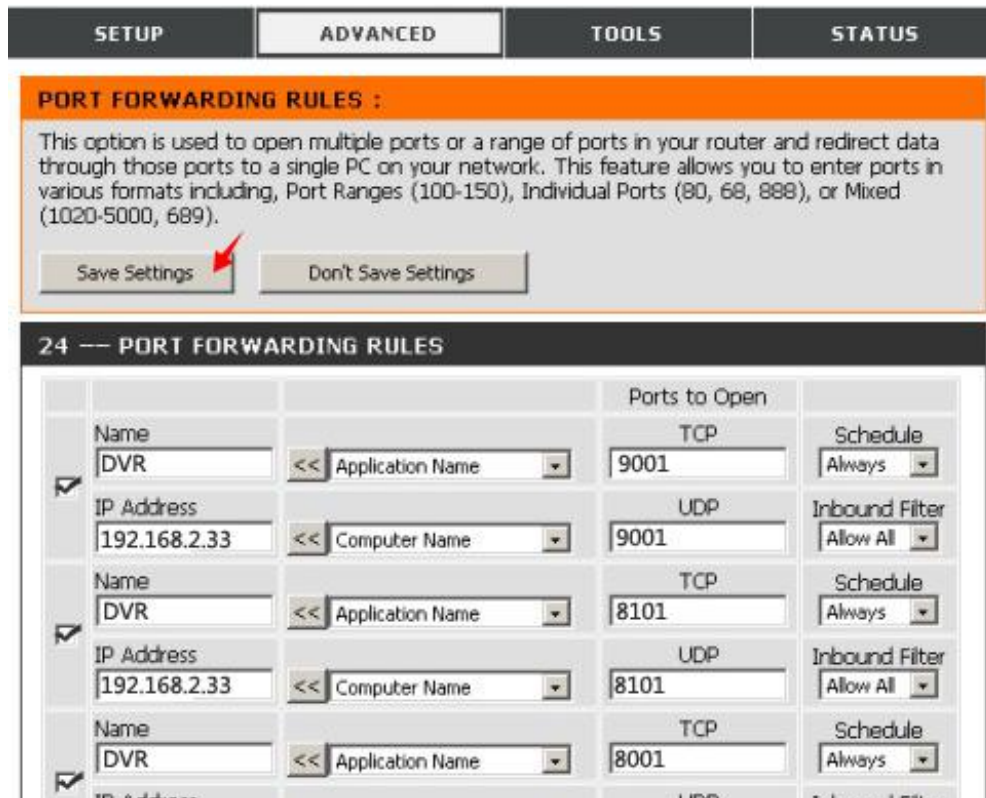
Helpful Hints...

Check the **Application Name** drop down menu for a list of predefined applications. If you select one of the predefined applications, click the arrow button next to the drop down menu to fill out the corresponding field.

You can select a computer from the list of DHCP clients in the **Computer Name** drop down menu, or you can manually enter the IP address of the LAN computer to which you would like to open the specified port.

Select a schedule for when the rule will be enabled. If you do not see the schedule you need in the list of schedules, go to the **Tools -- Schedules** screen and create a new schedule.

- Name:** fill in a name for MDVR port.
 - Ports to Open:** 8001, 8101, 9001.
 - IP Address:** Server IP address.
 - Inbound Filter:** TCP、UDP、Allow ALL, please select “Allow All”.
 - Schedule:** select “Always”.
- ✓ Fill in the ports, and click”**Save settings**”.



- ✓ After the port mapping settings, find the **"IP Address"** in the WAN, the IP Address is your CMS server IP. login the server IP on the CMS client to access.



Notes: When extranet access into LAN server, it need do mapping on the router. Then extranet can access into WAN IP.

- ✓ Change the Server IP to the related one, Access into MDVR
"menu" → "Network setting" → "LAN" → "Server IP" → XXX.XXX.XXX.XXX



6.9 Domain binding setting

After finished the server set up and the port mapping, you can login via network IP.

There are two ways to access the network as follow.

ADSL dial-up: It will assign a different dynamic IP address for each dial

Leased line: It will assign a static IP address, and you can access directly

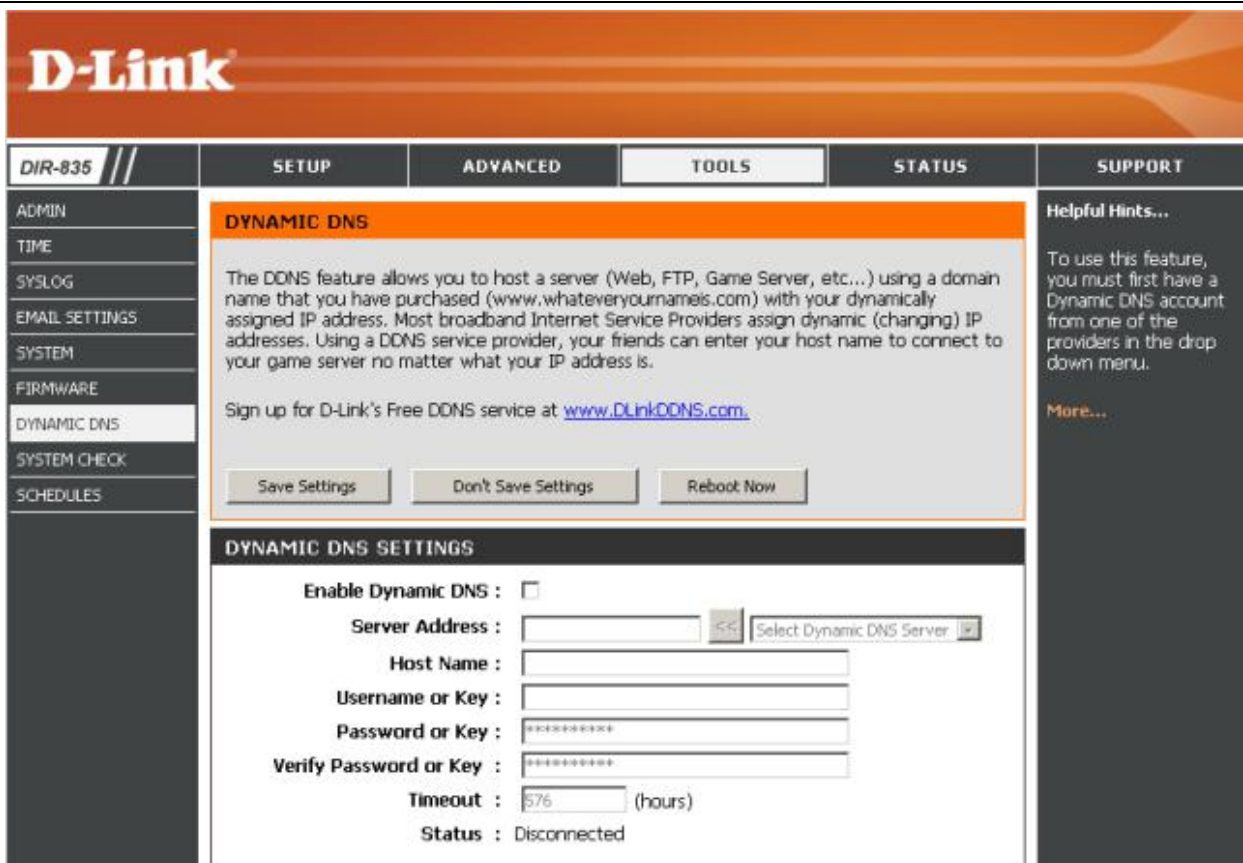
So, when set up the server with the way of ADSL dial-up, you can binding DDNS via domain in order to prevent the distribution of different dynamic IP in each dial.

Note 1 : DDNS is used to mapping the dynamic IP address to a static DNS. Client program will send the dynamic IP to the server program when the user access the network, then the server program will provide the DNS server to realize dynamic DNS.

Note 2 : If the dynamic domain name is free, you will temporarily unable to access via the free domain name when things going wrong with the the domain name service provider's server.

The related parameters below is for routers test. Please refer to actual network environment when installation.

- ✓ Access into router setup, select "**Dynamic DNS**" to check the related setup.



- a) **Enable Dynamic DNS:** Enable ON if you need to use DDNS
- b) **Server Address:** Fill in accordingly
- c) **Username or Key:** Fill in applied user name
- d) **Password or Key:** Fill in password
- e) **Verify Password or Key:** confirm the password
- f) **Timeout:** Timeout setting
- g) **Status:** Status of connection

Notes: DDNS need to be applied by customers if necessary.

- ✓ Fill in the user name and password, use DDNS login, it shows connect successfully if login properly, and will display the applied the DNS.

Notes: please refer to the Oray for the DNS apply.

- ✓ After DNS binding, you can access into server via DNS.

6.10 WIFI hotspot

1. To use the Wifi hot spot function, user has to set the “Netype” as “LAN” and the “DHCP” as “ON” in the DVR, see below picture:



Mark: Wifi hot spot only work for the mobile dvr with this function

WIFI hot spot default settings:

SSID: MDVR

Password: admin888

WIFI router default settings:

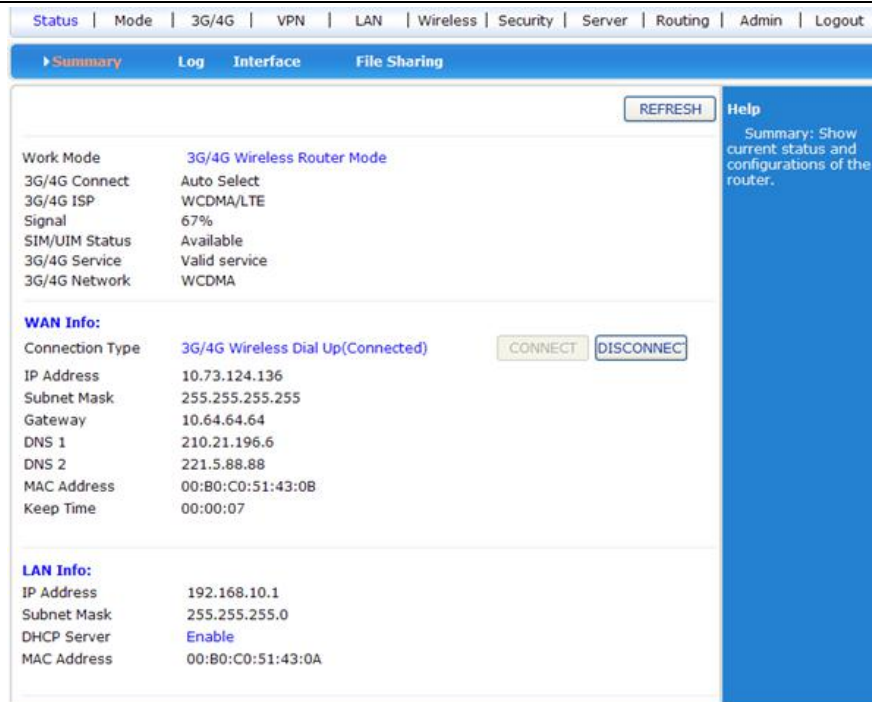
Router IP: 192.168.10.1

Name: admin

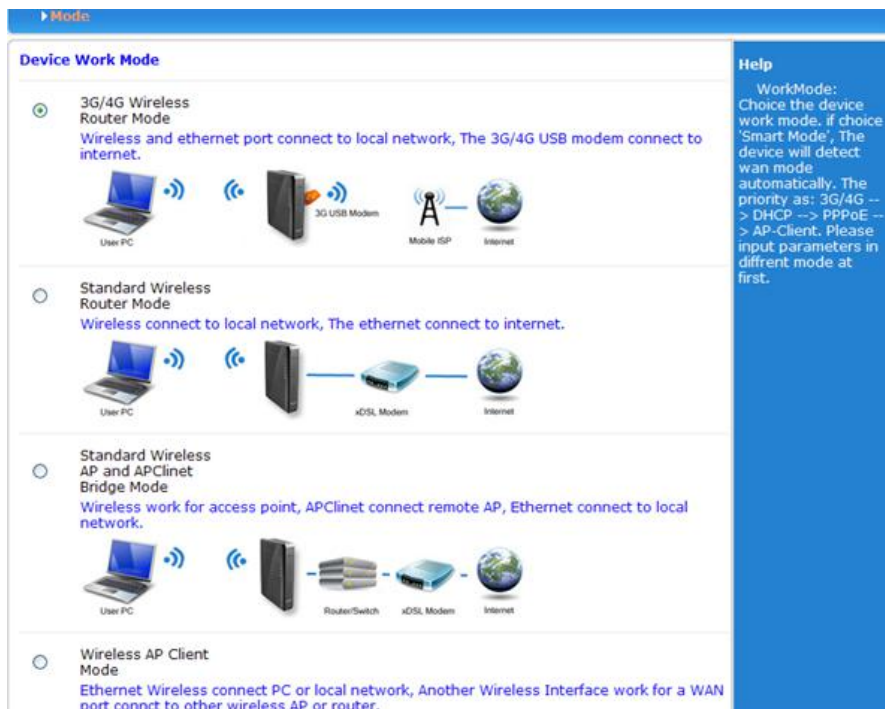
Password: admin

User can modify the SSID name and password by referring to the above settings via connecting with router.

2. Input the default router IP 192.168.10.1 in IE and enter the router menu by inputting default user name and password. The device working condition and 3G/4G dial up connection condition can be checked, see below picture:



- Click “mode”, there are options “3G/4G Wireless Router Mode”, “Standard Wireless Router Mode”, “Standard Wireless AP and AP Client Bridge Mode” and “Wireless AP Client Mode”, default is “3G/4G Wireless Router Mode”.



- 3G/4Gs set up, choose “3G/4G Device” in “Dial Device” and select “Auto select 3G/4G ISP” without changing the default settings.

Status | Mode | **3G/4G** | VPN | LAN | Wireless | Security | Server | Routing | Admin | Logout

Setup | FlowCtrl | Break-Detection | DDNS

3G/4G setup

Dial Device: 3G/4G Device UART1

Auto select 3G/4G ISP:

3G/4G ISP: WCDMA/LTE

APN: 3gnet

Pin Code:

Dialed Number: *99#

Username:

Password:

Authentication: Auto CHAP PAP

Auto Dial-up:

Router will reboot after dial: 5 times failed. (0 will disabled)

Extra AT cmd: (If there are more then one AT cmd , please use ';')

Network of 3G/4G

CDMA 1X/EVDO/LTE: CDMA 1X/EVDO Hybrid

GSM/TD-SCDMA/LTE: 3G/4G Top-priority

WCDMA/LTE: 3G/4G Top-priority

APPLY CANCEL

Help

3G/4G setup: Setup 3G/4G modem dial information.if enable 'Auto select 3G/4G ISP',The device will automatic input ISP dial information by IMSI. But the fuction olny use for Chinese ISP.

5. Choose "Lan" to do the related settings.

M2M 3G WiFi Module

China Unicom WCDMA Version: 2.1.7.6

语言/Language: English

Status | Mode | 3G/4G | VPN | **LAN** | Wireless | Security | Server | Routing | Admin | Logout

Setup | Binding | DHCP-Table

LAN

IP Address: 192.168.10.1

Subnet Mask: 255.255.255.0

DHCP Server Setup

Enable DHCP server

Start IP Address: 192.168.10.2

End IP Address: 192.168.10.254

Lease time: 1440 minute(s)

Note: Addresses that can be allocated must be in the same segment with LAN IP and could not include LAN IP.

APPLY CANCEL

Help

LAN: IP and Subnet Mask can be modified based on need of local LAN. 'LAN MAC Clone' can be used to modify LAN MAC address as required.

6. Choose "Wireless" to modify the SSID name and password.

M2M 3G WiFi Module 语言/Language: English China Unicom WCDMA Version: 2.1.7.6

Status | Mode | 3G/4G | VPN | LAN | **Wireless** | Security | Server | Routing | Admin | Logout

Basic | **Security** | Advanced | WDS | Station List | Mac Access

Basic

Wireless Enabled

802.11 Mode 11b/g/n mixed mode

SSID MDVR

Do Not Broadcast SSID

Channel 2437MHz (Channel 6)

HT Channel 2457MHz (Channel 10)

HT Data Rates Auto

Channel BandWidth 20 20/40

Guard Interval Long Auto

20/40 BSS Coexistence Disable Enable

40Mhz Intolerant Disable Enable

APPLY CANCEL

Help

Basic: Setup AP SSID, 801.11n/b/g mode.

7. Choose “Wireless”-- “Security” to modify the “Encrypt type” and “WPA-PSK key”, then click “APPLY”.

M2M 3G WiFi Module 语言/Language: English China Unicom WCDMA Version: 2.1.7.6

Status | Mode | 3G/4G | VPN | LAN | **Wireless** | Security | Server | Routing | Admin | Logout

Basic | **Security** | Advanced | WDS | Station List | Mac Access

Security

Security Mode WPA2-PSK

WPA-PSK

Encrypt Type TKIP AES TKIPAES

WPA-PSK Key admin999
(8-63 ASCII characters, or 64 hexadecimal characters <0-9 or a-f, A-F>)

Rekey Interval 3600 second(s)

APPLY CANCEL

Help

Security: Setup wireless AP security, use WPA2PSK, AES is good choice.